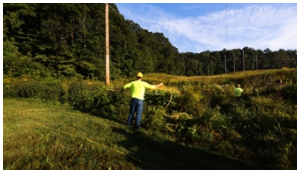


WEEKLY TAILGATE: PROPER CLEAN-UP OF PESTICIDE SPILLS

Week of

CORPORATE MESSAGE

PROPER CLEAN-UP OF PESTICIDE SPILLS



Herbicides are known under the overall term as **Pesticides**.



The quantities of herbicide we use are generally not hazardous, but clean-up of **ANY** spill is important.



In the event of any container spill, first **control and contain** the spill. Then proceed with clean-up.



Each herbicide has a **Safety Data Sheet**. Know where they are at all times.



Know your **emergency contact information and procedures**.

SAFETY VIDEOS

English: vimeo.com/townsendcorp/6ne

Spanish: vimeo.com/townsendcorp/6ns

GOALS REGIONAL/LOCAL OPERATIONS

Last Week

This Week

IMPORTANT REMINDER

DAILY SAFETY NUGGETS

MONDAY

What does the word "SWIM" stand for in this week's tailgate session?

SWIM: Stop the Spill; Warn Others; Isolate the Area; Minimize Exposure.

TUESDAY

What are two methods of stopping the spill?

1) Place the lid back on; 2) Set the container upright; 3) Close the valve

WEDNESDAY

What section of the SDS (Safety Data Sheet) refers to Accidental Release Measures? Section 6

THURSDAY

Where can you locate copies of our HAZCOM program along with the associated SDS sheets?

The General Foreman and/or Supervisor should have copies of the HAZCOM program. It can also be accessed by Supervision on our corporate Help Desk website.

FRIDAY

What should you do if you find a chemical container that is damaged and in danger of leaking?

If it is not yet leaking immediately contact your supervisor. If it is leaking follow the Accidental Release measures outlined in Section 6 of the SDS.

SATURDAY

What should you do if you find a container that is unlabeled? Consider the container as dangerous and immediately report the discovery of such containers immediately to your supervisor.

DRIVE SAFETY TIP

Seat Belts are Key

Remember! Wear a Seat Belt!



PROPER CLEAN-UP OF PESTICIDE SPILLS

Weekly Tailgate Sign-in

Company: _____ Location: _____

Supervisor: _____ Date: _____

- | | |
|-----------|-----------|
| 1. _____ | 21. _____ |
| 2. _____ | 22. _____ |
| 3. _____ | 23. _____ |
| 4. _____ | 24. _____ |
| 5. _____ | 25. _____ |
| 6. _____ | 26. _____ |
| 7. _____ | 27. _____ |
| 8. _____ | 28. _____ |
| 9. _____ | 29. _____ |
| 10. _____ | 30. _____ |
| 11. _____ | 31. _____ |
| 12. _____ | 32. _____ |
| 13. _____ | 33. _____ |
| 14. _____ | 34. _____ |
| 15. _____ | 35. _____ |
| 16. _____ | 36. _____ |
| 17. _____ | 37. _____ |
| 18. _____ | 38. _____ |
| 19. _____ | 39. _____ |
| 20. _____ | 40. _____ |